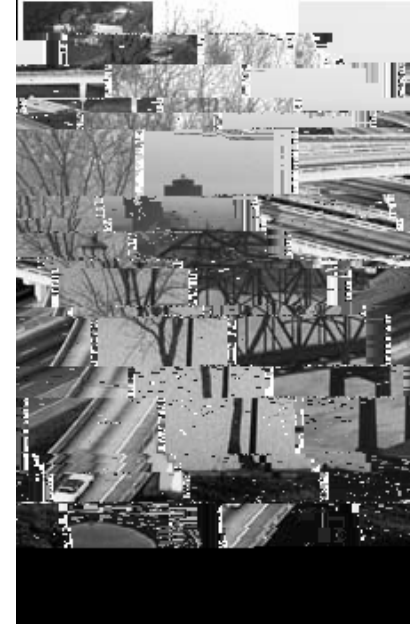


The Department of Civil and Environmental Engineering is always interested in how our alumni are doing. We hope you will take time to complete the Alumni Update information below. Please include information on your recent professional and per-

## Civil & Environmental Engineering Department





**Forever LSU: The Campaign for Louisiana State University,** launched at the end of June, 2006. The goal is to raise \$750 million by the University's Sesquicentennial in 2010. The College of Engineering set a target of \$100 million.



For over a decade now, Clovis Morrison, an instructor in the Department of Civil and Environmental Engineering, has offered students the chance to visit local dock sites to see real life examples of what they have learned in class. This past fall semester, Morrison and the students of CE 4430, Design of Marine Structures on Inland Waterways, took a field trip to the Port of South Louisiana at Reserve. The students toured the facilities where they were able to see two ship docks at the Globalplex, Reserve Terminal.

“Visiting the Port of South Louisiana’s docks showed many interesting things that linked the calculations and computer analysis that we have done throughout the class with real field visualization,” said a student who participated in the field trip. “It was benefiting to see the enormous bridge cranes and oversized forklifts so that I can visualize the loading on the platforms and accurately assess the worst case scenarios.”

At this point in their college career, students majoring in civil engineering have accumulated countless hours of classroom and self-study time in design and analysis of structures. This field trip gave students the opportu-

nity to finally understand the practical application of their previous in-class design work.

It was also a great opportunity for students to see an actual operation site and the working conditions of engineers.

Morrison said the trip was not an

04snd3(ss w[Louisiana ates01 Tw[Morrison and the throuau7gilabshi[esgn a95t1-eS  
lpwed ne to unde-  
ations awe’e done tn ciass doprTj0 -1.153 TD0 fiar1OnBeng cson ao see t4pweu7ga  
wae, s aloa0(ie steenon tpap5.4(or ao sTJ0 -1.1475 TD0.0016 Tw0 Tw(eeal ty ” )TjT  
tas not diff STUDENT NEWS 1 0.11373 0.48235 scn00.00034Twa .0010 Tw[eCLAS  
Ing Cnmpan5-.49(ies ) Hehi anTD ee  
lLounsinaa,ct3de23o-0.12()trlat.0sgtAmrincnd Council  
oas nappoint3d(ed, by Go)-6.3ie oRoe  
lpgand gSur  
gBoard nd tond yean fMr. McKe aoalso hassoes4t.0sssd tf erTJ0 -1.153 TD-.0016 To  
ahehi and in-547(sorary me)-6.2(mb)-6.2(e tf eChi Epsiln ond )amem  
tbe tf eT f tMr. McKe aohasLouisiana ates01 Tw[In ccvilc.05i3de23i-0.19(vities ) Heh

The Department of Civil and Environmental Engineering's part of the Forever LSU Campaign launched in earnest on November 17, 2006. Wilfred and Shelley Barry sponsored this superb event for select alumni and friends, and hosted it in their lovely home in Baton Rouge.

"The Forever LSU capital campaign was getting started, and George Voyiadjis and Don Eisenberg asked me to help with the Campaign Steering Committee. After deciding to become a member of the committee, I thought it was time to step up and publicly indicate to my peers and friends that this was a worthy cause4ends was a worthy

