

YES, count me in!

I want to donate to the: Civil and Environmental Enrichment
 Civil and Environmental Engineering Siess Endowment Fund

Here's my contribution of:
 \$10,000 \$5,000 \$2,000 \$1,000 \$500 \$250 \$ _____

Payment: Check enclosed — Please make check payable to:
LSU Foundation/Civil & Environmental Engineering
 Credit card (Circle one): Visa MasterCard Discover AmEx

Account number: _/

Expires: _/_/ - _/_/ - _/_/

Name as it appears on card: _____

The CEE Department would like to express our appreciation for the generosity of alumni and friends who have taken part in the Forever LSU campaign. Here are just a few of the CEE alumni and friends who have played a role in Forever LSU, the largest, most ambitious fundraising campaign in the school's history. Their contributions, as well as yours, are vital to the betterment of this department.

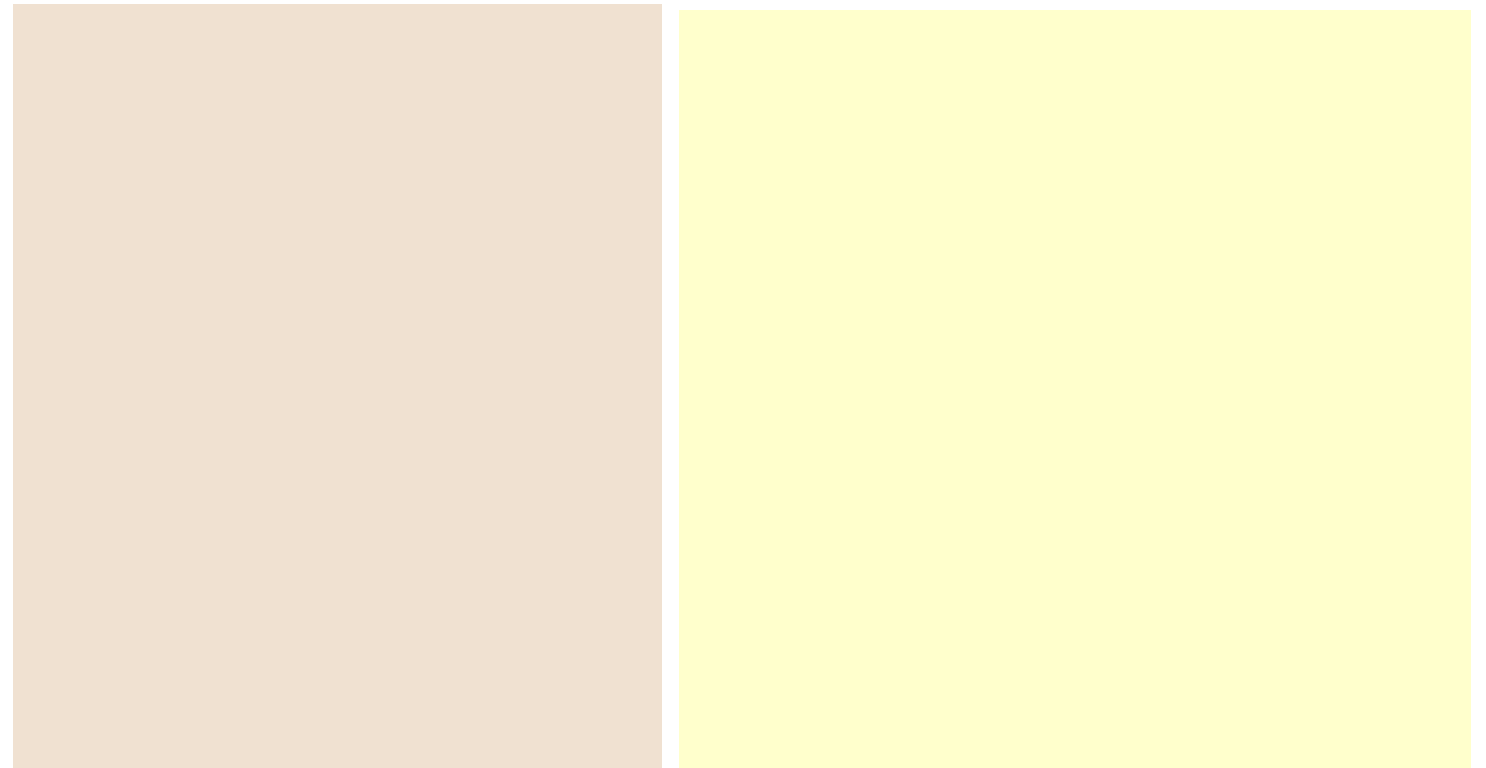
**Joseph W. Carmena, Sr.
Memorial Scholarship**

John N. "Jack" Carmena, along with his brothers Joseph Carmena, Jr. and Thomas N. Carmena have endowed an undergraduate scholarship in the name of their late father, Joseph W. Carmena, Sr., a CE Alumnus.

Joseph W. Carmena, Sr., a CE Alumnus, was the third of seven children, the son of a farmer, born January 6, 1891 and raised in Zachary, La. He was the only one of his siblings to complete college. In 1912, he received a BS Degree in Civil Engineering from LSU. Since there were no scholarships offered in his time, he earned some of his college expenses by raising and selling sweet potatoes. When he attended LSU, the campus was near the State Capital in Baton Rouge and as a cadet, he lived in the Pentagon Barracks.

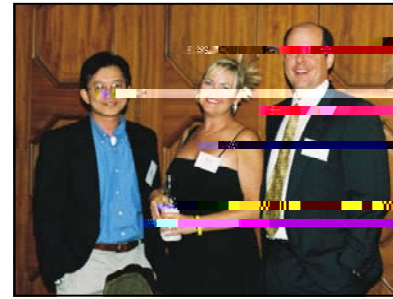
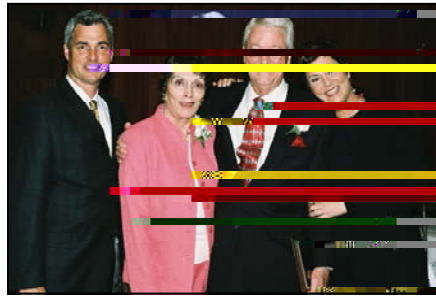
Prior to serving in the U.S. Army in World War I, he held multiple positions in the construction industry. He was commissioned a Lieutenant in the Corps of Engineers and served during World War II. After his military discharge, he accepted a position with Standard Oil of Louisiana, a predecessor of Exxon-Mobil. During his career with Exxon, he worked on various capacities in their Maintenance and Construction Group at the Baton Rouge Refinery.

John retired in 1956 and spent the next eleven years in intellectual pursuits, one of which was writing a manuscript on Human Engineering. He died in 1967. One of his children and one of his grandchildren acquired Engineering degrees from LSU.



Civil and Environmental Engineering's Annual Banquet Held

The Civil and Environmental Engineering Department held its annual banquet on April 20, 2007. The banquet was held at the University Faculty Club in Baton Rouge, LA and was a great success. During the event, faculty awards were presented and new Hall of Distinction members were inducted.



The Civil and Environmental Engineering Department

Mostafa Elseifi
LSU's Department of Civil
and Environmental Engi-
neering is pleased to an-
nounce the addition of a
new faculty to its Civil Engi-
neering Program. Dr. Mo-
stafa Elseifi joined the de-
partment in fall 2007 from
Bradley University.

In 1988, he graduated from Ferdinand Buisson
Preparatr Ao Sch-7.1(roolin fParis, France D)r.Els