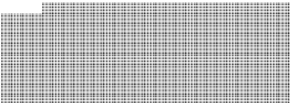


The Department of Civil and Environmental Engineering is always interested in how our alumni are doing. We hope you will take time to complete the Alumni Update information below. Please include information on your



YES, count me in!

I want to donate to the:

Civil and Environmental Engineering Siess Endowment Fund

Raphael G. Kazmann Center for Graduate Studies

Other (please designate) _____

Here's my contribution of:

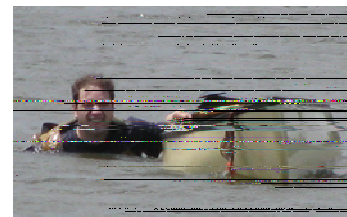
\$10,000 \$5,000 \$2,000 \$1,000 \$500 \$250 \$ _____

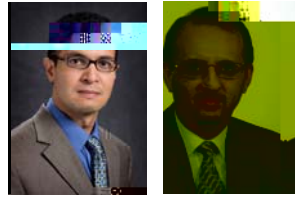
Payment:

Check enclosed

Please make check payable to:

LSU Foundation/Civil & Environmental Engineering





Clifford J. Mugnier, Instructor in CE, was invited to present a seminar on Military Geodesy with respect to Grids and Datums used for Effects-Based Targeting at the Joint Warfare Analysis Center (JWAC) in Dahlgren, Virginia in early January. JWAC is a premier science and engineering institution tasked with solving complex challenges for our nation's warfighters. JWAC uses social and physical science techniques and engineering expertise to assist warfighters in support of our national security. JWAC coordinates directly with the staffs of all Unified Commands, Combatant Commands, Department of Defense elements, military services, and other government departments and agencies in order to protect our country and help our nation's armed forces accomplish their missions. The series of lectures was attended by the civilian and commissioned officer staff of the center, and Cliff was later presented with the Commander's coin in an award ceremony after conclusion of the lecture

Mehmet T. Tümay, Fellow and a Life Member of the American Society of Civil Engineers, is the Georgia Gulf Distinguished Professor Emeritus in the Department of Civil and Environmental Engineering at Louisiana State University. He has been an active LSU Faculty 1976-2005, and has served the LSU College of Engineering as the Associate Dean for Research and Graduate Studies, and as Director of the Donald W. Clayton Interdisciplinary Graduate Program in Engineering Science, 1997 –2004. Dr. Tümay received his B.S., M.S., and Ph.D. from Robert College School of Engineering, University of Virginia, and Istanbul Technical University, respectively. His academic, research and consulting affiliations include universities, research institutions, and industry in the U.S., The Netherlands, France, Turkey, Korea, Norway, Taiwan, Poland, Brazil and People's Republic of China.

Dr. Tümay is currently a Distinguished Visiting Professor at the Korean Advanced Institute for Science and Technology (KAIST) in Deajon, S. Korea, and an Adjunct Professor at Bogazici University in Istanbul, Turkey.

Dr. Tümay's major field of interest is geotechnical engineering. He has done extensive research for the past 40 years in the areas of in-situ evaluation of engineering properties of soils, soil physico-chemical behavior, and novel methods of soil improvement. He has earned national and international recognition from the consulting and academic communities for his pioneering research accomplishments, mainly in electronic cone penetration and computer-aided data collection/reduction systems for evaluation of the engineering behavior of geomedia. He was recently recognized "for outstanding contributions to the profession, research and education in geotechnical engineering," at the GeoShanghai 2006 International Conference in Shanghai, China, June 2006.

Dr. Tümay has served as Project Director / Principal Investigator of numerous grants from prestigious national and international agencies, a major international consulting company from the Netherlands, established the Fugro Post-Doctoral Fellowship at LSU dedicated to the advancement of in-situ testing under Dr. Tümay's supervision.

During 1990-1994 Dr. Tümay served as the Director of the Geomechanical, Geotechnical & Geo-Environmental Systems (G3S) program at the National Science Foundation, Washington, D.C

DR. SONG-KAI YAN ELECTED FELLOW OF ASCE

Dr. Song-Kai Yan, CE Ph.D. graduate of 1989, was elected Fellow of ASCE. Dr. Yan is currently the senior staff consultant and director of hydrology and hydraulics at Shaw Environmental & Infrastructure, Inc. where he specializes in surface water hydrology and hydraulics modeling and in hydraulic engineering design. Dr. Yan is a former Ph.D. student of Dr. D. Dean Adrian of the Department of Civil and Environmental Engineering. He is also a member of the LSU Department of Civil and Environmental Engineering External Advisory Board and serves as an adjunct professor of engineering, also here in the department. The CEE department congratulates Dr. Yan on this outstanding accomplishment.

PASSING OF ALUM ERIN K. LAHR

Erin Krielow Lahr received her bachelor of science in Environmental Engineering in 2001 and a master of science in Civil Engineering in 2003. She moved to Austin, Texas in Fall 2003 and worked for PBSJ in the Water/Wastewater design division until her death. Erin received her PE designation in late 2007 in the state of Texas.

Erin died on December 14th, 2008 near the 23.5 mile point while running the Dallas White Rock marathon. She was 29. Erin's goal was to qualify for the Boston Marathon and race officials estimate that had she completed the race she would have accomplished her goal. Erin was an avid runner and triathlete who completed the Austin marathon in February 2008 as well as several half-marathons and sprint triathlons. She was also training to compete in the Ironman 70.3 competition that was held in New Orleans in April 2009.

Erin was married to Jeff Lahr, BS in Civil Engineering from LSU (2000), in April 2007. The two entered married life following a wedding and reception on the LSU campus. Erin was a rabid LSU fan and cheered her beloved Tigers whenever the opportunity arose. Erin was a member of the Golden Band from Tigerland during her Freshman and Sophomore years at LSU.

She is survived by many friends and a loving family who will miss her dearly. Her loving husband Jeff has established an endowed scholarship in her name in the LSU Department of Civil and Environmental Engineering, funded by gifts from family, co-workers and friends. Special thanks to Erin's company, PBS&J for their wonderful support. Others desiring to contribute to this scholarship may do so- please contact Don Eisenberg via eisenberg@lsu.edu or 225-578-2441.

If you are a CEE graduate and have news that you would like to share, please email your news and a high-resolution photo (if available) to Julie Mueller at jmueller@lsu.edu

John A. Graves was born in Baton Rouge, Louisiana and, at age six, moved to Opelousas. He graduated from what is now Opelousas Catholic in a pre-college curriculum. Mr. Graves lost his father as a junior in high school which necessitated his having to provide 100% of his college expenses. Having been inspired by President Kennedy's challenge to put men on the moon, John was drawn to Aeronautical Engineering at LSU and enrolled as a freshman in the fall of 1959. Aeronautical Engineering was replaced by Civil Engineering as John believed he would not like the work environment for AE and might prefer more outdoors as offered by civil. Larry McKee gave John his first job in the engineering business as a rodman in a field survey crew. Maintaining a full time job while attending school he graduated from LSU in the spring of 1965 with a B.S. in Civil Engineering. With his sights set on being in the consulting engineering business John spent the next year or so taking selective, mostly graduate level course work in Business Administration.

Mr. Graves' first regular full time job was with Edward E. Evans & Associates in 1968. Mr. Evans, a former LSU professor of structural engineering, founded the firm in 1953. He credits Mr. Evans as an excellent "teacher" from whom he learned a great deal beginning with structural work on the LSU Maravich Assembly Center. In the early 70's believing that he had serious health problems, which he didn't, Mr. Evans effectively turned over the day to day operation of the firm to John.

In 1986 Mr. Graves acquired full ownership of the firm at which time the name was changed to the current Evans-Graves Engineers, Inc.

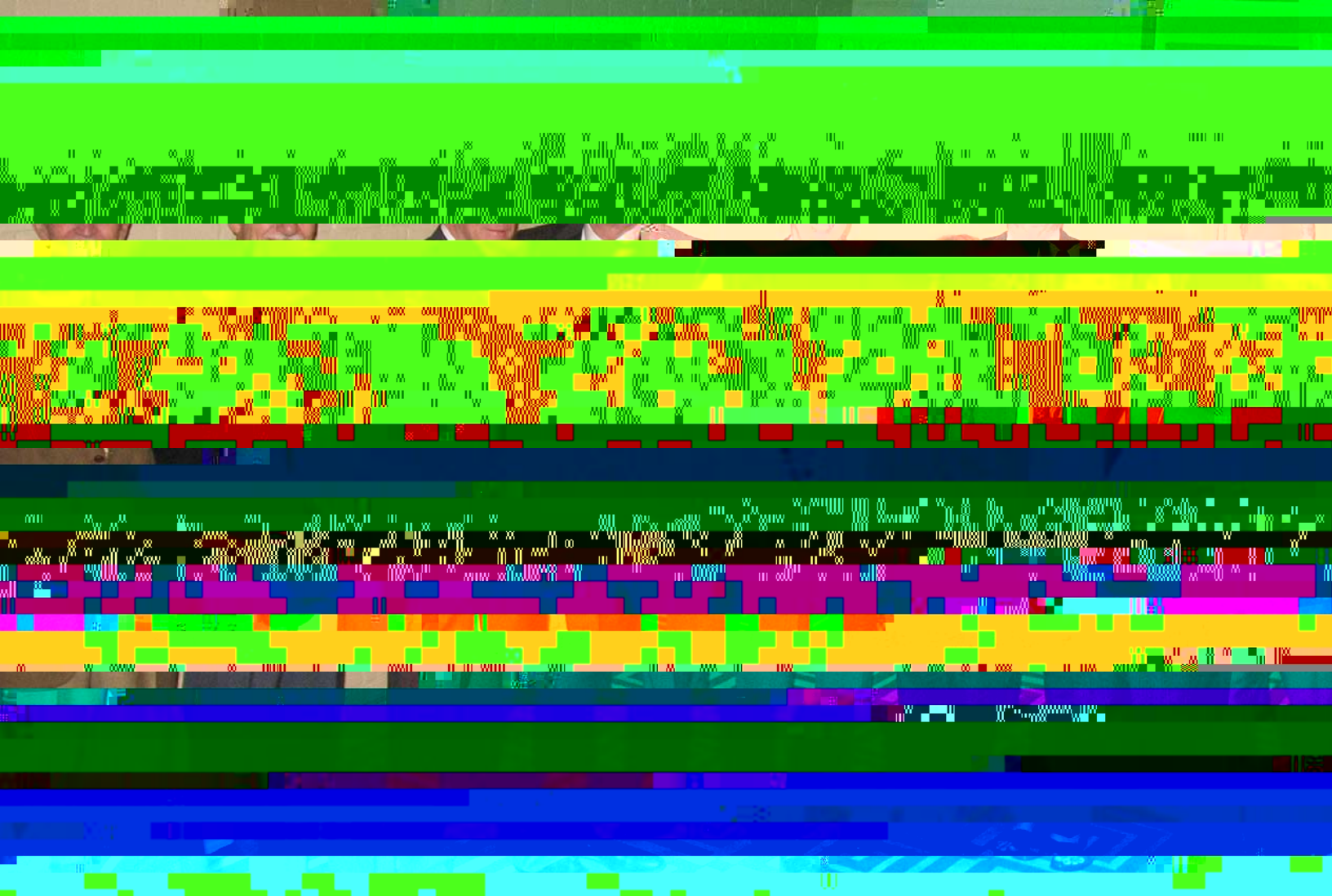
Mr. Graves has over 40 years experience in private consulting as a Civil Engineer, Surveyor and Administrator. Over 35 years of that period has been spent as a Principal of Evans-Graves Engineers, Inc., responsible for plan production and management of all phases of projects undertaken by the firm;



Charles Frazier, CEE Alum, passed away in a recent car accident. Charles graduated from LSU in 1999. While at LSU, he served as president of the National Society for Black Engineers.

While at LSU and after his graduation Charles worked at the engineering firm of ABMB in Baton Rouge. After which he and wife Stephanie (whom he met while attending LSU) moved to Dallas, Texas where he worked at the engineering firm of HNTB. After graduation, they moved to Dallas upon graduation, where he worked at the engineering firm of HNTB. After a few years in Dallas, they moved to Barcelona, Spain where he worked for the engineering firm of ALG. While at ALG, Charles was in charge of Global Development for the firm and traveled to many countries, including India, Bahamas, Guatemala, Turkey Georgia, Russia and South Africa to develop business and work on projects for the firm.

Charles was on a business trip in South Africa where he passed away in a car accident. Charles was incredibly respected for his knowledge of engineering and his ability to want to bring improvements to some of the less developed areas of the world. He is survived by his wife Stephanie and young son Anselm. Our condolences go out to his family and friends.



On April 17, 2009 at the Sheraton Hotel in Baton Rouge, the Department of Civil and Environmental Engineering held their annual Hall of Distinction and Faculty Awards banquet. In addition to current and past inductees, attendees included Dr. George Voyiadjis (Department Chair), Dr. Astrid Merget (Executive Vice Chancellor and Provost), Dr. Richard Koubek (incoming Dean of the College of Engineering) and Dr. David Constant (Interim Dean of the

