



LSU



1845-1846

as
s a , a , ! a s
G s a a , U
a a a , a a ass ,
a LSU a s as s -
a a , G s a , ass s
a s
S a , as s a
, a s a s a s
s a , a , , a

s a s a , ass-
s a a a a ,
a a a
s , s Ga s
a a a , s s

Our enrollment continues to grow, and we have about 300 undergraduate students and 35 graduate students. Both are the highest numbers since the early 1980s, and our class sizes have continued to increase. We are still seeing a very active recruiting effort for our students, and we are happy to see so many of our graduates going into the upstream oil and gas industry. The message from our Industry Advisory Group last year was: We need the additional graduates, but don't reduce the quality of the education they are receiving. We continue to have a lot of discussions among the faculty, staff and our stakeholders on how to manage our high enrollment while continuing to improve our courses. We have received a lot of support from our alumni and industry friends in this regard, both financial and in time and effort. This support has allowed us to improve our courses with examples of EP technology such as well logging demonstrations, visits to field locations and training centers, acquisition of the needed materials, experiments, and staff support for our teaching laboratories, utilization of state of the art software in our computer lab, and many other areas.



The Department's utilization of its field scale laboratory (the Petroleum Engineering Research and Technology Transfer Laboratory or PERTT Lab), expanded with the appointment of Dr. Radonjic this fall. Dr. Radonjic taught a revised version of the Petroleum Engineering Field Operations Laboratory Class (PetE 3037). The new version of the class emphasizes direct, "hands-on learning" with actual oil-field equipment and makes use of the unique teaching environment afforded at the PERTT Lab facility.

Dr. Smith also used the PERTT Lab to host a new equipment identification exercise for one session of his Drilling Engineering Class (PetE 4045). This was the first time the the PERTT Lab has been utilized during that particular class.

In addition to these newer activities, the undergraduate Well Control Laboratory Class (PetE 4046), continues to be held during spring semesters and the facility's #2 well is used for logging demonstration during Dr. Sears' Well Logging Class (Pete 3036).

An Analog Drilling Simulator (sponsored by Martin Decker Totco) is also under development at the facility. The objective of this project is to construct a classroom scale apparatus for demonstrating basic rig instrumentation principles and simple drilling concepts.

Equipment testing and training work for MI-Swaco, Secure Drilling, Halliburton and T3-Energy are on going at the facility. Most recently, MI-Swaco did some preliminary performance testing a new 15k AutoChoke and improved CD-1400 de-gasser.



D st t z s



t t t s D st t t v -
t t s ss - t t t



t ts t t z t s



t t t z t t s s t s s -
t s s s z t s t



ss t t

Our faculty search last year was successful, and we have added a new faculty member, Dr. Mileva Radonjic. Dr. Radonjic comes to us from BP, and her research interests are in cement technology and CO₂ sequestration. The department has another search underway, and we advertised in the July edition of the Journal of Petroleum Technology. We hope to add another faculty member to the department by next August.

Our faculty recruiting has taken on a greater importance with the retirements in May of Drs. Zaki Bassiouni and Julius Langlinais. Both have played a key role in the life of the department for many years, and we wish them well.

Our faculty and staff have had a number of achievements and recognitions recently. Fred Thurber received his PhD

from LSU in Educational Leadership and Research. Andrew Wojtanowicz received the Distinguished Faculty Award from the Society of Petroleum Engineerings at the Annual Conference. Dan Rao was promoted to full professor, and recognized as an LSU Rainmaker – a distinction for outstanding research during the last year. Subhash Kalla, a PhD student working for Chris White, had a paper on Efficient Design of Reservoir Simulation Studies nominated by SPE for the Rossiter W. Raymond Memorial Award. The department's graduate program was ranked 8th in the nation again by US News and World Report.

We are looking forward to an active year at LSU, and hope to see many of you if you visit the campus.

-S S a-s

On Tuesday, May 6, 2008 the Craft & Hawkins Department of Petroleum Engineering hosted a luncheon in honor of our beloved and newly-retired professors Dr. Zaki Bassiouni and Dr. Julius Langlinais. Current faculty and staff were joined for this event by retired faculty and staff in an effort to reconnect and look back on the department's rich history. We were fortunate to be joined by Mrs. Betty Langlinais, Mr. and Mrs. Murray Hawkins, Dr. and Mrs. Ted Bourgoyne, Mrs. Julie Bourgoyne, Mrs. Jan Easley, Mrs. Mary Haynes, Dr. Bill Hise, Dr. and Mrs. William Holden, Ms. Linda Hoover, Mr. Bob Nicholson, Mr. and Mrs. Mike Veazey, and Dr. and Mrs. Walter Whitehead.

During the luncheon, department chairman Dr. Stephen Sears asked Dr. Andrew Wojtanowicz to say a few kind words about Drs. Bassiouni and Langlinais, and he enthusiastically agreed. After many laughs and a few stories, each gentleman was presented with a plaque from the department thanking them for their years of service.

Dr. Bassiouni joined LSU in 1977. He was a professor and chair of the department from July 1983 to June 2004, before assuming the position of Dean of the College of Engineering. He received a BS in petroleum engineering from Cairo University in Egypt, a diploma in geophysics from the Ecole Nationale Supérieure de Pétrole et des Moteurs of Paris in France, and a MS (DEA) and PhD (Docteur En Sciences) from the University of Lille in France. He has worked for the French Petroleum Institute, Marathon Oil Company, and Chevron Oil Company. His experience includes well logging, petrophysics, reservoir engineering, property evaluation and alternative sources of energy. Despite his long list of obligations as dean, he agreed in his final semester to lend the department a much-needed helping hand by teaching Formation Evaluation one last time and sealed his reputation as one of the toughest professors in the department! He leaves the department with a rich legacy of scholarship, ethics and community. He has since moved to California with his wife Mrs. Chantal

Bassiouni. We wish him all the best in his travels with the SPE Distinguished Lectures and hope that he continues to drop by for a visit, from time to time.

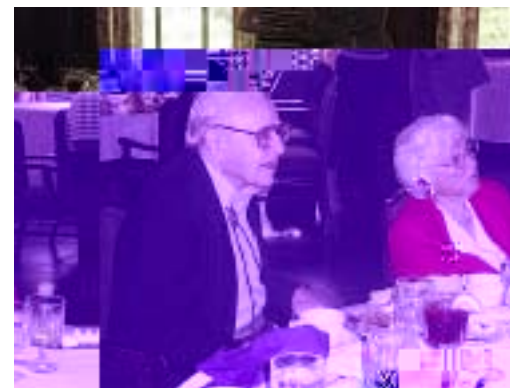
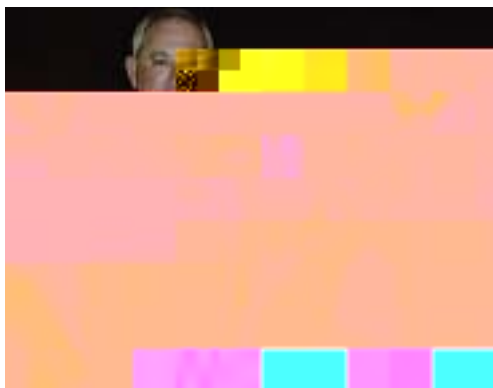
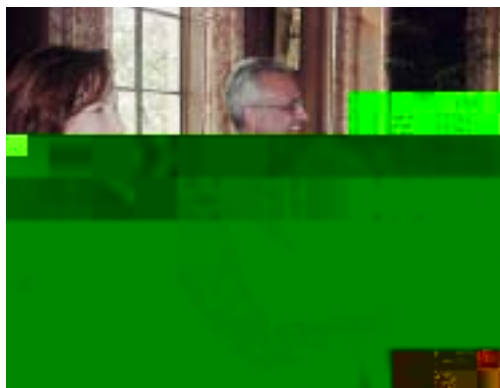
Dr. Langlinais returned to LSU in 1980. He was a professor and served as Associate Dean from July 1988 to June 2004, before finishing his last years as Interim Chair and Professor. He received a BS in Physics from the University of Southwestern Louisiana, and a MS and PhD in Physics from LSU. He has worked for Continental Oil Company, Superior Oil Company, USL, and the University of Tampa. His experience includes production engineering, drilling engineering, petrophysics, and petroleum economics. He was highly touted by students as a likeable and helpful professor because of his knack for counseling and gift of gab. Dr. Langlinais plans to enjoy retirement relaxing at his home in Baton Rouge and making himself available to his grandkids as much as possible. We wish him the very best and expect to see him and Ms. Betty at various departmental functions such the barbecues and crawfish boils.

-A , . ' .



ts z t z t t z s s- s t t ss s s

z t t s s s t t z t t s s s t t



s s t ss s st s t s s t t

tt s st z st s s

t t t s st t t



It is a great pleasure to be invited to contribute to The Pipeline. This task is difficult as it is my last chance at reminiscing on my association with the College of Engineering at LSU that lasted more than 31 years, 25 years and 40 days of which were in the Craft and Hawkins Department of Petroleum Engineering.

The Department and the College have come a long way since the summer of 1977, the year I joined the Department as Assistant Professor. First, I witnessed a move to the Center for Engineering and Business Administration (CEBA) building, a brand new building shared with the College of Business. CEBA was recently renamed Patrick F. Taylor Hall in recognition of one of our illustrious petroleum engineering alumni. The department is now named after two of our beloved colleagues Professors Benny Craft and Murray Hawkins.

The department maintains the long standing tradition of producing well sought after engineers. The College is on the list of "Preferred Partners" of many major corporations who vie to hire our graduates. LSU engineering graduates are known for hitting the ground running. They are well prepared technically and socially.

The size of the department's graduate program has increased significantly especially after the addition of the PhD program in Petroleum Engineering in the early 1980's. The department is now aligned with the College's desire to be known for the breadth and depth of its research activities. The department research portfolio includes federal, state and industry funding, and is growing. The college has recently started an Oil and Gas Research Initiative to build on the historical strength of the department.

Development activities which were nonexistent, for all practical purposes in the 1970's, have grown by leaps and bounds. The current development office, and the endowment portfolio that goes with it, is the largest among all LSU colleges. We have cemented our relations with alumni, some of whom were long forgotten, and have built strong bridges to industry. The department of petroleum engineering has led the way and accounts for one of the largest endowments of any single department on campus.

There is still a lot of progress awaiting the department. Continued growth is assured by the quality and motivation of faculty, staff, students and alumni. However the faculty size and facilities need to increase to match the new surge in enrollment.

Although I am technically a retired Dean, I will continue to be a Petroleum Engineer. I plan to be involved with continuing education and consulting activities. My first significant contribution to our industry is taking part in the 2008-09 SPE Distinguished Lectures program. I will speak at 37 SPE Sections located in 20 countries. I will be presenting the concepts and results on improved oil and gas research conducted by the department.

The continued support and friendship of my colleagues, alumni, and LSU friends has made for an enjoyable and unforgettable journey which I will always recall with fondness and gratitude.

La ass
ss
a a s a
a a s
s s s s





The SPE Gulf Coast regional paper contest was held April 4-5 at the University of Texas at Austin. Six students were selected to represent the Craft and Hawkins Department of Petroleum Engineering through the internal departmental competition in early March. These six students, who were the top two winners in each division (Ph.D, M.S. or B.S.), and their topics are shown as follows:

- Dayanand Saini (Ph.D): Applicability of the Line Tension Concept to Solid-Liquid-Liquid Systems
- Subhash Kalla (Ph.D): Reservoir Characterization Using Seismic Inversion Data
- Ali Afsharpoor (M.S.): Mechanistic Sipoor fud!!r eMHahzMacterdXGNSXeMof NSXeMtcesseMUsingN].v*VTeESWTVVNSXNSXeMof Ferd

UNDERGRADUATE HIGHLIGHTS

The 2007-08 academic year was a year of continued growth for LSU's Craft & Hawkins Department of Petroleum Engineering undergraduate program. Increasing petroleum prices due to strong product demand and a weak dollar enticed numerous students to investigate LSU's petroleum engineering undergraduate program as a possible path to a financially lucrative vocation. With the return of students to LSU's camps for the fall 2007 semester, our faculty and staff quickly realized that freshman and sophomore petroleum engineering classes had increased in size to populations not seen since the 1980s. Pete 1010 (Introduction to Petroleum Engineering) for example had an enrollment of 124 students and Pete 2031 (Reservoir Rock Properties) had an enrollment of 68 students. Despite the large student populations in freshman and sophomore classes, our faculty and staff are confident that we can continue to devote the attention that our students require to ensure that they receive a top-quality undergraduate petroleum engineering education. Of course, faculty and staff are preparing for an increasing student enrollment in junior and senior courses as freshman and sophomore students progress through the undergraduate program.

The 2007-08 academic year began, as it has each fall semester, with our annual kick-off barbeque to welcome new incoming students to LSU's petroleum engineering program and to welcome continuing students back to campus after summer internships and/or summer academic studies. In addition to our annual kick-off barbeque in early September and thanks to the help of industry representatives, 150 undergraduate petroleum engineering students participated in our Annual Mock-Interview Panel Discussion and Mock Interviews. The time that industry professionals gave to our students who participated in the mock interview program helped participants prepare for the fall interview season by helping them improve their resumes, develop and refine their interviewing skills, and help participants understand the protocol of a professional interview.

Demand for students graduating from LSU with a bachelor's degree in petroleum engineering remained high in academic year 2007-08. As such, all 43

undergraduate students who graduated in academic year 2007-08 and had the right to work in the United States gained employment in the petroleum industry. As in the recent past, petroleum exploration and production companies and service companies competed for LSU's top petroleum engineering graduates; and as always, the companies who had an entrenched history of hiring summer interns, participating in student events, and helping students by financially supporting our department had the greatest success enticing students to join their organization upon graduation.

Many of our current students are per-

The Petroleum Engineering Campaign Steering Committee has been very busy this past year raising funds for the Craft & Hawkins Department of Petroleum Engineering. Lou Soileau, a 1971 Petroleum Engineering graduate, joined the committee to work as co-chair with Bill Flores (B.S. 1980 Petroleum Engineering). Other committee members, all Petroleum Engineering alumni, are:

D t t t t t

- C. Wayne Manuel was selected as one of the 13 recipients of the LSU Outstanding Service Award for 2007.
- Dan Rao was promoted to full professor, and recognized as an LSU Rainmaker – a distinction for outstanding research during the last year.
- Fred Thurber received his PhD from LSU in Educational Leadership and Research.
- Andrew Wojtanowicz is the recipient of the SPE Distinguished Achievement Award for Petroleum Engineering Faculty.
- Seung Kam was invited to give a seminar at Rice University.

A t t

- In December 2007, Chevron pledged \$4.75 million to the Forever LSU Campaign, which includes \$1.9 million to two programs based in the Craft & Hawkins Department of Petroleum Engineering. The focus areas are the Chevron Petroleum Engineering Emerging Faculty Recruitment Fund and the Chevron Engineering Multi-disciplinary Reservoir Visualization Center.
- Charles L. Barney (Bach 1949) was named 2008 alumnus of the year by LSU. Barney now operates his own business based in Houston, Mark I Enterprises, which invests in oil and gas as well as real estate. He is a generous supporter of multiple aspects of LSU, including The Charles L. Barney Field Camp Program and the STRIPES program at LSU.
- Marta Bermudez (Mast 2007) won the SPE International Paper Contest in 2007 with her paper "Effect of Sugar on the Thickening Time of Cement Slurries." Bermudez is currently working in Houston for Chevron as a production engineer.
- Subhash Kalla (Mast 2005), who recently completed his PhD with Chris White, was nominated by SPE for the Rossiter W. Raymond Memorial Award for his paper "Efficient Design of Reservoir Simulation Studies."
- Mr. and Mrs. William S. Flores, Jr. (William, Bach 1980), Mr. Warren S. Hawkins (Bach 1970), Mr. and Mrs. Murphy J. Hebert (Murphy, Bach 1958), Mr. and Mrs. Donald W. Keller (Bach 1957), Randy L. Limbacher (Bach 1980), Mr. and Mrs. Don



WE WOULD LIKE TO ACKNOWLEDGE AND THANK OUR 2007-08 SUPPORTERS ONCE AGAIN:

Harold P. Abels, II Accenture Foundation, Inc. Edward, Jr. and Janice Amar American Association of Drilling Engineers – Lafayette Chapter American Petroleum Institute – Houston Chapter Ronald W. Atchley Estate of Donald J. Barbier Wylie R. Barrow, Jr. Barton Operating, LLC Tracy L. Begland William C. Benton Bruce E. Bernard Dr. & Mrs. William J. Bernard Vincent J. Bila Donald B. Bonniecarrere Richard and Gina Bourque Jerry D. Bullock BP Foundation, Inc. James and Mary Burtner Chevron Inc.	Chevron Products Co. Michael J. Connolly ConocoPhillips F. Baron and Charlotte Craft Jacques and Clara Creppel Keith E. Curtis, Jr. Joseph A. D'Amico Franklin and Edwina Dartez Devon Energy Corporation Peter T. Dudley A. Norman, Jr. and Denise Duplantis Thomas R. Dykes ExxonMobil Corporation ExxonMobil Foundation Pierre Faure John A. Fleniken William, Jr. and Mary Flores* Jonathan D. Floyd Max R. Fugler Kim J. Galjour Kenneth and Susan Garrett William H. Garrison Charles E. Gibson	John Gieck Willie A. Goudeau Bradley and Carla Govreau Joanne D. Granier Halliburton Foundation, Inc. Warren S. Hawkins* Lance E. Hebert Robert A. Hill Kim M. Hitt Jeffrey R. Hughes Thomas H. Hutto, Jr. Richard W. Huye William B. Jackson, Jr. Seung Kam and Jeong You Donald and Gayle Keller* George A. Khoury, Jr. Neil H. Klock, Jr. Eric M. Kocian Edmond and Mary Langhete Raymond and Madelaine Lasseigne Feltus B. Leake, III Francis P. LeBlanc Lynn and Monalee LeBlanc William R. Lewis	Charles A. Lipari Wilton J. Lowe, Jr. Jake and Patsy Lowenhaupt Lamar E. Loyd Marathon Oil Corporation Mike and Tony McGauley Michael F. and Melanie McKenzie Brigadier General Ralph J. Melancon, Sr. Alan and Virginia Mikell James and Carol Morgan Kim E. Moser John R. Murphey, Jr. Christina R. Muth Bridget B. Myers Newfield Exploration Co. Thomas H. Nunnally Victor and Vicki Obadiah Occidental Oil & Gas Co. Nona O'Connor Richard and Shirley O'Shields	Chris A. Prattini Raymond and Eva Rodriguez Stephen A. Rohleder Gary and Pamela Ross RPSEA Richard L. Rusch Schlumberger Stephen and Barbara Sears Sempcheck Services, Inc. Jerry E. Shea, Sr. Shell Oil Company Shell Oil Company Foundation Andrew J. Shoup, Jr. Bruce A. Smith James E. Smith Society of Petroleum Engineers – Dallas Section Society of Petroleum Engineers – Evangeline Section Society of Petroleum Engineers – Gulf Coast Section Louis C. Soileau, IV* Spectra Energy Stone Energy Corporation	Blaise F. St. Raymond Bill and Connie Stone Dr. Jacob Thomas Alfred J. Thomas, II Kent and Carmel Veron Sheldon and Anais Watsky David and Cynthia Welch William E. Westhall Van and Gail Whitfield Lee M. Wilson Andrew and Loda Wojtanowicz Lida L. Ziegler
--	--	---	--	---	---

